



Quick Start Guide : BioCapture™

The BioRadio™ is intended for use in education and research applications only. The BioRadio has not yet been reviewed, certified, or approved by the FDA or similar organization for use with patients or clinical purposes. In no case should the BioRadio be used for any diagnosis, treatment or other medical decision-making purposes. All use of the BioRadio must be in compliance with 45 CFR 46 and appropriate human subjects' procedures as they exist within your institution.

Your BioCapture physiological monitoring system combines innovative bioinstrumentation hardware and transducers, with flexible software for data acquisition, recording and review. It is a wireless, lightweight system that can monitor up to fourteen channels of electrical activity from the heart, brain and muscle, and transducer inputs, such as airflow, temperature and blood pressure.

Quick Start guide

What's included

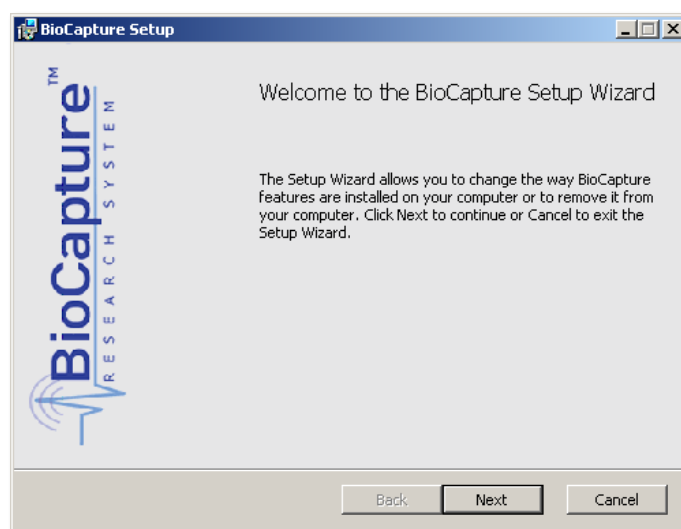


Installing BioCapture software

Go to <http://glneurotech.com/bioradio-software> and follow the guided instructions to properly install BioCapture software. Follow the guided instructions to properly install the hardware drivers and BioCapture software.



The BioRadio is intended for Microsoft® Windows® 7 operating system or later and Microsoft Windows-based machines.





Setting up the BioRadio User Unit for the first time

Please allow your BioRadio to fully charge before first use. When the battery indicator shows three solid bars, the BioRadio is fully charged and ready to use. Use the included USB charge cable to connect and charge your BioRadio.

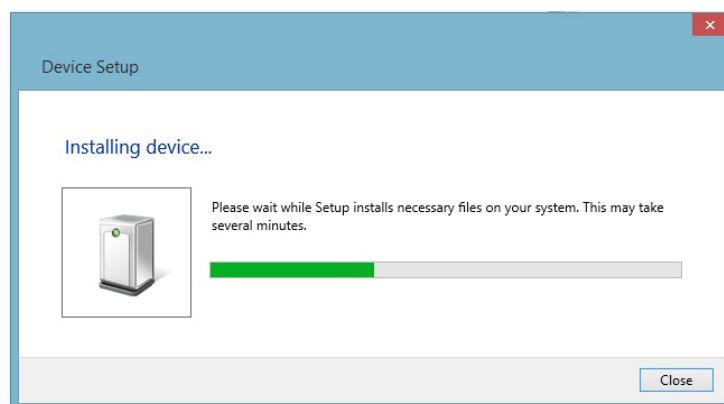
i When the BioRadio is charging for the first time, all of the device's indicators will turn on.

Setting up the Bluetooth USB adapter for the first time

A PC that is Bluetooth enabled sends and receives signal and device information to and from the BioRadio User Unit.

i The included USB Bluetooth adapter is not a data storage device.

The optional USB Bluetooth adapter simply plugs into any USB port. When plugged in, your PC will automatically detect and install the Bluetooth adapter. Driver software is successfully installed when Windows confirms that new hardware is installed and ready to use.



USB Bluetooth adapter installation



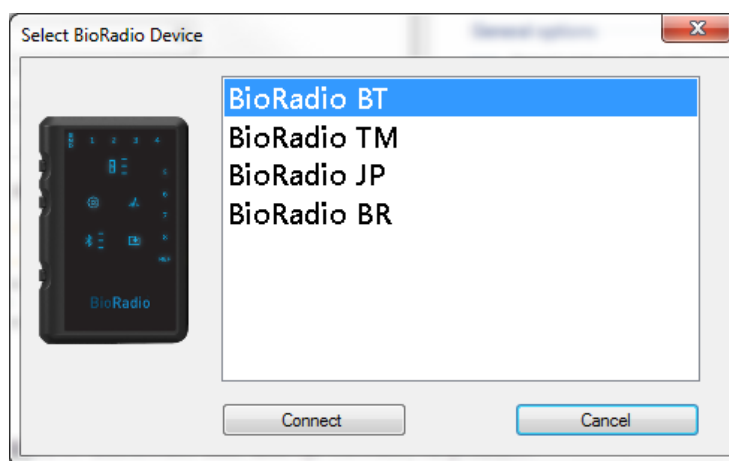
The included USB Bluetooth adapter works best when installed as a Generic Bluetooth radio, under Bluetooth Radios in Device Manager. Updating device drivers may negatively affect performance.

Using BioCapture Software for the first time

Before proceeding, make sure the User Unit is on and your PC is Bluetooth enabled.

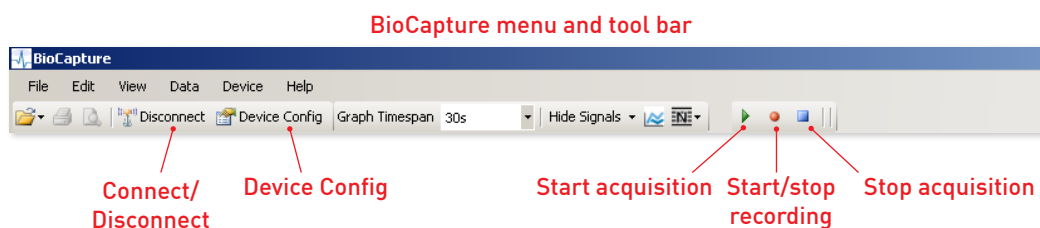
Open the BioCapture software from the start menu by going to Programs > Great Lakes NeuroTechnologies > BioCapture or via the shortcut on your PC's desktop.

Select "Device -> Select Device" from the menu bar to allow BioCapture to select and establish connection between the User Unit and the PC.



Select BioRadio Device window

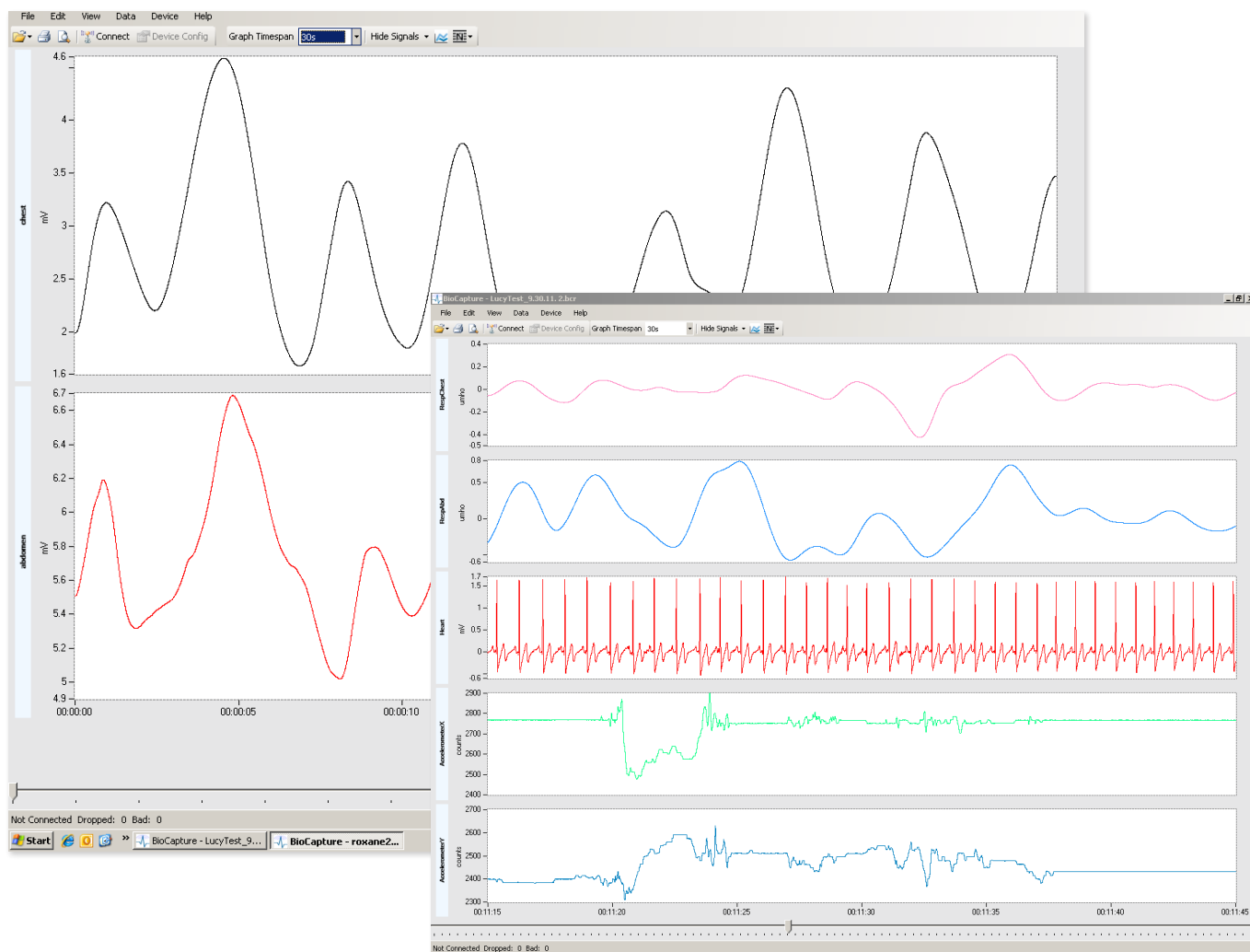
Press "Device Config" to view your system's default configuration and to change the device configuration for your data recording session. This programs all necessary parameters, including input range and filters, according to the particular signal. Press "Program" at the bottom right of the window to complete device configuration.



To start acquisition, press the green play button located in the tool bar. To record data files, press the red record symbol. To stop recording, press the blue stop acquisition button.

Ready. Set. Go!

Both the BioCapture system hardware and software are now ready for use. Please refer to the BioCapture Owner's Manual for information on system hardware configuration options, session settings and recording data.



BioCapture and BioRadio are trademarks of Great Lakes NeuroTechnologies Inc., Independence, OH. Acknowledgments: This work utilizes technologies supported by Small Business Innovation Research grants from the National Institutes of Health (NINDS, NHLBI, NIMH) and the Department of Defense.

HAVE QUESTIONS? NEED TECHNICAL SUPPORT? WE'RE HERE TO HELP.

Telephone: (216) 361-5410 or Toll-free (US only) 1-855-GLNeuro (1-855-456-3876)

9:00 a.m. - 5:00 p.m. EST, Monday - Friday · support@GLNeuroTech.com

<https://GLNeuroTech.com/products/bioradio/support/>

The BioRadio is intended for use in education and research applications only. The BioRadio has not yet been reviewed, certified, or approved by the FDA or similar organization for use with patients or clinical purposes. In no case should the BioRadio be used for any diagnosis, treatment or other medical decision-making purposes. All use of the BioRadio must be in compliance with 45 CFR 46 and appropriate human subjects' procedures as they exist within your institution.



Great Lakes NeuroTechnologies
6100 Rockside Woods Blvd. N., Suite 415
Independence, OH 44131
Tel: 216-361-5410
Fax: 216-361-5420

DCO G527 G396-5014 Rev B © Great Lakes NeuroTechnologies Inc. 2021