

# Owner's Manual

**BioRadio<sup>TM</sup>**

## Introduction

The BioRadio™ is a highly configurable wireless data acquisition system capable of acquiring a wide range of signals. The flexibility and portability of the system is particularly suited for many applications in research and for teaching laboratories, where the basics of general data acquisition, unique challenges associated with physiological signal collection and various techniques used in the collection, processing, and analysis of those physiological signals can be taught. The BioRadio and all accessories sold for use with the BioRadio are sold exclusively for these purposes and in no case should the BioRadio be used for any diagnostic or therapeutic purposes. Any reference to a physiological type of signal or sensor in this manual, in the software, or any other literature or labelling for the BioRadio is exclusively intended for data collection that will only be used as noted above.

## Intended Use

*The BioRadio is intended for use in education and research applications only. The BioRadio has not yet been reviewed, certified, or approved by the FDA or similar organization for use with patients or clinical purposes. In no case should the BioRadio be used for any diagnosis, treatment or other medical decision-making purposes. All use of the BioRadio must be in compliance with 45 CFR 46 and appropriate human subjects' procedures as they exist within your institution.*

## Care Instructions

Disinfectant wipes are suitable for cleaning and disinfecting the BioRadio and Sensor Pod. For accessories, please refer to the accessory's instructions.

## Warnings

- Improper routing of leads may result in a choking hazard.
- Do not use in conjunction with a defibrillator.
- Do not connect the device to the user when a USB cable is connected for charging or data transfer.

For proper battery disposal, follow procedures as defined by local regulations or return to Great Lakes NeuroTechnologies Inc.

THIS DEVICE COMPLIES WITH PART 15 OF THE FCC RULES. OPERATION IS SUBJECT TO THE FOLLOWING TWO CONDITIONS: (1) THIS DEVICE MAY NOT CAUSE HARMFUL INTERFERENCE, AND (2) THIS DEVICE MUST ACCEPT ANY INTERFERENCE RECEIVED, INCLUDING INTERFERENCE THAT MAY CAUSE UNDESIRE OPERATION.

**NOTE:** *The manufacturer is not responsible for any radio or TV interference caused by unauthorized modifications to this equipment. The following will immediately void equipment warranty: device tampering, removal or attempted removal of the tamper seal, misuse of the device, misapplication, and device modification. In addition, unauthorized modifications to the equipment will void the end-user's authority to operate the equipment.*

## Minimum System Requirements

- Windows 7
- Intel 1.86GHz CPU (or equivalent)
- 1GB RAM (2GB for 64-bit systems)
- 1024 X 768 or greater display resolution (BioCapture software does not support 4k or QHD display resolutions)
- One available USB 2.0 port
- 1GB hard disk space
- Microsoft compatible keyboard and mouse or other pointing device
- Adobe Acrobat or other PDF Reader
- Microsoft .NET Framework 4.5
- Bluetooth® 4.0 radio or adapter

**NOTE:** *Product performance may vary based on your system configuration.*

## Package Contents and Warranty Information

Great Lakes NeuroTechnologies Inc. (GLNT) thanks you for your recent product purchase. GLNT offers phone technical support (9 AM-5 PM ET) and warrants the BioRadio (parts and labor) for one year from the date of purchase. Technical support after the warranty period will be charged hourly. Call GLNT for hourly rates. For your benefit, we recommend that you record the pertinent details below. If necessary, this information will allow us to better serve your needs. We highly recommend that you staple a copy of the sales receipt to the blank pages in the back of this manual.

Please check to make sure your kit has the required components and record the following data to maximize customer service:

S/N:	_____	<input type="checkbox"/> BioRadio
		<input type="checkbox"/> Bluetooth® adapter
Device ID:	_____	<input type="checkbox"/> USB data cable
Date of		<input type="checkbox"/> Carry case
Purchase:	_____	

## Contents

Introduction.....	1
Intended Use.....	1
Care Instructions.....	1
Warnings.....	1
Minimum System Requirements.....	1
Package Contents and Warranty Information.....	2
Contents.....	3
Chapter 1: BioRadio Hardware.....	5
Overview.....	5
BioRadio.....	5
Chapter 2: System Setup.....	8
Installing BioCapture Software.....	8
Bluetooth Setup.....	8
BioRadio Device ID.....	8
Pairing the BioRadio to BioCapture Software.....	9
Chapter 3: BioCapture Software.....	10
Status Bar.....	10
Configure the BioRadio.....	10
Configuration Name.....	10
Programmable Channels.....	10
Figure 6: Configuration Window.....	10
Sample Rate.....	10
Channel Type.....	11
Sensor Pod Channels.....	11
Motion Sensors.....	11
Bandwidth Indicator.....	11
Program Device.....	11
Data Collection.....	12
Start Acquisition.....	12
Record Data.....	12
Event Markers.....	12
Data Review.....	12
Save/Open Recordings ( <i>*bcrx files</i> ).....	12
Import Memory Records.....	12
Save/Open Sessions ( <i>*bcxs files</i> ).....	13
Configure Display Properties.....	13
Set Graph Time Span.....	13

Graph Settings .....	13
Signal Properties .....	13
Filter Settings.....	14
Frequency Analysis.....	14
Exporting Data.....	14
Data Integrity Summary .....	15
Chapter 4: Software Development Kits .....	15
Chapter 5: Technical Specifications .....	16
Chapter 6: Frequently Asked Questions.....	17

# Chapter 1: BioRadio Hardware

## Overview

The BioRadio is a wireless data acquisition system capable of recording, displaying, and analyzing signals in real time. Using sophisticated wireless and miniaturization technologies, the BioRadio provides data acquisition that is untethered thus allowing one to move freely while monitoring signals from a computer.

Signals are amplified, sampled, and digitized, which can be wirelessly transmitted to a computer Bluetooth receiver and/or recorded to onboard memory for post-analysis.




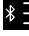
Figure 1: BioRadio Primary Module and Sensor Pod

## BioRadio






The BioRadio can be configured with a variety of sensors to acquire a variety of signals. Wireless streaming and recording is done over a Bluetooth 2.4-2.484 GHz band and approximately 100 foot range. Data can simultaneously be recorded to onboard memory for post analysis. Battery charging is done over a micro-USB port and provides at least eight hours of typical use.

One or two Sensor Pods may be added to the BioRadio for additional signal input options (as shown in Figure 1).

The BioRadio (Figure 1) can be powered on by pressing the top button on the left side of the primary module and can be turned off by holding the button for five seconds. Three modes will be available to the user (Table 1).

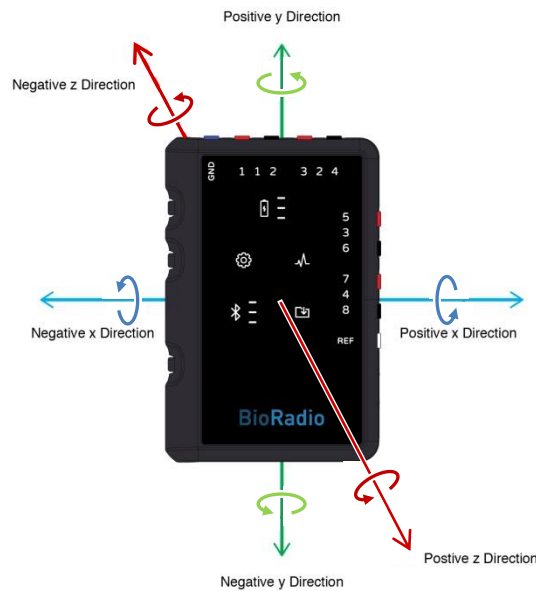
First, Configuration Mode  indicates to the user that the BioRadio is not recording data and will allow the user to customize the device's configuration if connected to a computer over the Bluetooth connection. When the primary module is searching for a connection, the wireless connection indicator  Bluetooth symbol will pulse and signal strength bars will cycle through the three levels. Once connected, the wireless connection indicator will be solid and indicate the signal strength via the three (3) horizontal bars next to the Bluetooth symbol.

**Table 1: BioRadio Modes and LED Indicators**


BioRadio Indicator	Description
	Configuration Mode
	Data Acquisition Mode (Streaming and/or Record to Memory)
	Recording to Memory
	Wireless Connection
	Battery Level and Charging



The user can now program the BioRadio channels for either differential (up to four channels) or single-ended (up to eight channels and a reference) mode. The ground input will always be enabled. Input resolution and sampling rate can also be set. These inputs are primarily designed to record from biopotential sensors, such as off-the-shelf snap-type or gold cup electrodes that attach to the body on one end and plug directly into the BioRadio on the other end.

The BioRadio can be configured to record signals from  $\pm 1\mu\text{V}$  to  $\pm 2\text{V}$ . A differential channel may also be configured for galvanic skin response (GSR) using only two surface electrodes or an inductive chest band. An embedded motion sensor in the BioRadio records triaxial linear acceleration and angular velocity. Positive and negative axes and rotations are indicated in Figure 2.



**Figure 2: Accelerometer Axes**

Data Acquisition Mode  indicates active streaming to a computer over a Bluetooth connection, active recording to the BioRadio’s onboard memory, or both. Wireless streaming is initiated from BioCapture software. While streaming, the data acquisition mode indicator will pulse and the wireless connection indicator will be solid.


Recording to memory  can be initiated by pressing the middle button on the left side of the BioRadio. When enabled, the corresponding indicator  will become solid. The internal memory in the BioRadio is capable of recording 8 channels of data at 500Hz sampling rate and  $1\mu\text{V}$  resolution for over 90 hours. The memory indicator will turn red when less than thirty minutes of recording remains. A new \*.dat file will be created every time a record to memory session is started. File names

will be assigned based on the date and time at which the recording is started in the following format: MDhhmmss.DAT where

- M ranges from 1 to 9 and A to C, representing the month (1 to 12)
- D ranges from 1 to 9 and A to V, representing the day of the month (1-31)
- hh ranges from 0-23, representing the hour
- MM ranges from 0-59, representing the minute
- SS ranges from 0-59, representing the second
- .DAT is the fixed data file extension

**NOTE:** A user cannot reconfigure the BioRadio when data acquisition is in progress.

**NOTE:** If the date is unable to be initialized, the filename will default to the name #.DAT where # is a number starting at 00000001 and incrementing by one for each file name with an error.

While in data acquisition mode, the user can indicate an event by pressing the bottom button on the primary module. These events can be recorded to onboard memory or streamed to a computer. The battery level indicator  will indicate Full (3 bars), Good (2 bars), Low (1 bar), or Critically Low whereby the battery symbol will turn red. When charging, the battery symbol will pulse. Sensor Pod

Each sensor pod (Figure 1) allows the user to connect one pulse oximeter and one sensor (Table 2). The BioRadio supports the following sensors: hand dynamometer, spirometer, surface temperature sensor, force plate, and blood pressure sensor. Each pulse oximeter records photoplethysmogram (PPG), heart rate, and oxygen saturation. The BioRadio can record from up to two sensor pods at a 250Hz sample rate.

**NOTE:** It is recommended to connect the sensors to the sensor pod before starting acquisition.

**Table 2: Supported Sensor Pod Inputs**

Sensor	Measurement
Hand Dynamometer	Force (Newtons)
Spirometer	Air Flow Rate (Liters per second)
Surface Temperature Sensor	Temperature (Fahrenheit)
Force Plate	Force (Newtons)
Blood Pressure Cuff	Pressure (mmHg)
Pulse Oximeter	Photoplethysmogram (units)
	Heart Rate (Beats per minute)
	Oxygen Saturation (Percent)



## Chapter 2: System Setup

### Installing BioCapture Software

1. Go to <https://glneurotech.com/bioradio-software>  
(Updates to BioCapture software will also be provided from this link).
2. Enter the password to access the software link (provided by sales representative and included in Quick Start Guide)
3. Download the BioCapture Software
4. Install the software and follow the on-screen prompts.

### Bluetooth Setup

The BioRadio acquires and streams data over a Bluetooth connection with the computer.

If the computer is equipped with internal Bluetooth: make sure the Bluetooth is enabled.

If the computer is not equipped with internal Bluetooth: connect the external Bluetooth adapter provided with the BioRadio system into a USB port on the computer and wait for the automated driver install to complete.

Note: If the computer is equipped with internal Bluetooth but you need to use the external Bluetooth adapter, the internal Bluetooth receiver must be disabled before the external Bluetooth receiver can be used.

### BioRadio Device ID

Each BioRadio is assigned a unique device ID located on the back of each unit. The first time a BioRadio is used with a computer, the BioRadio must be paired with BioCapture software. The unique device ID will ensure that you are selecting the correct BioRadio to pair with BioCapture (Figure 3).



Figure 3: BioRadio Device ID

## Pairing the BioRadio to BioCapture Software

1. Ensure that the BioRadio is turned on
2. In BioCapture Software, click Device and then Select Device
3. A list of BioRadio devices turned on and not connected to other computers will appear (Figure 4)
4. Select the device ID and click Connect
5. The first time BioCapture connects to a specific BioRadio, wait for the driver and Bluetooth activities to complete.
6. The BioRadio ID will now display on the BioCapture status bar at the bottom of the window.
7. Follow the same steps to reassign the BioRadio ID.
8. One is only able to connect to a BioRadio unit when the device is in configuration mode and not recording to memory.

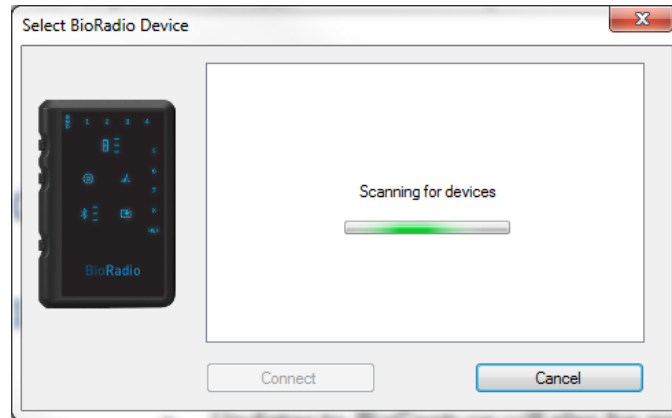


Figure 4: Select BioRadio Device Window

**NOTE:**

Once your BioRadio has been paired with the BioCapture software, you are able to connect and disconnect the connection between the two by pressing the "connect" or "disconnect" in the toolbar (refer to Figure 5).

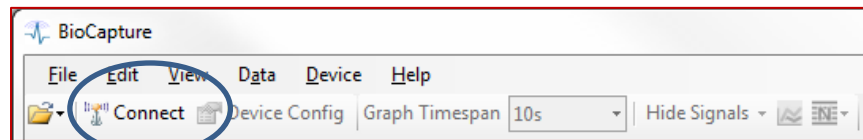


Figure 5: Connecting/ Disconnecting BioRadio to BioCapture

## Chapter 3: BioCapture Software

The BioCapture software allows the user to collect, display, save and analyze data collected from the BioRadio. The intuitive design provides access to hardware configuration, data collection, review and analysis.

### Status Bar

The status bar at the bottom of the BioCapture main window will display the connection state of the BioRadio, the device ID, and the device firmware version and the dropped packet count when connected.

### Configure the BioRadio

Configuration of the BioRadio is performed through the Configuration Window, accessible from the tool bar or device menu (Figure 6). When the BioRadio is connected to BioCapture, the Device Config option becomes available. When selected, a window will open allowing one to configure the BioRadio channels.

### Configuration Name

When the BioRadio is configured, the configuration parameters are saved to the BioRadio under a custom name.

### Programmable Channels

The BioRadio primary unit can be programmed for either four differential or eight single-ended channels. Each channel can be individually enabled and assigned a name, which will appear as the y-axis label when streaming data. The default channel name will be the channel number.

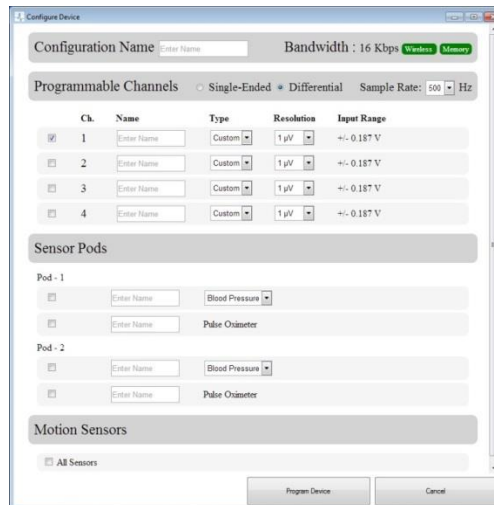


Figure 6: Configuration Window

### Sample Rate

The BioRadio programmable channels can be set to 250Hz, 500Hz, 1KHz, 2KHz, 4KHz, 8KHz, or 16KHz. All channels are sampled at the selected sampling rate. The Sensor Pod and internal Motion Sensors are sampled at 250Hz.

## Channel Type

Each programmable channel can be predefined for various applications. Table 3 lists some common ranges and bit and voltage resolutions along with common physiological signals that fall in that range. The channel type selected from the dropdown menu will assign the corresponding voltage resolution (see Table 3 for corresponding bit resolution and input range). The custom type will allow one to specify a desired voltage resolution between 1 $\mu$ V and 5mV (see Chapter 5 – Technical Specifications for additional details).

**NOTE:** Signal amplitudes outside of the input range may rail (be assigned the positive or negative limit value) or may be non-linear.

**NOTE:** For GSR applications, the BioRadio must be configured for differential mode with GSR on Channel 1

**NOTE:** Channel type names (EEG, ECG, etc...) are for convenience only and not intended to be used for any medical diagnostic or therapeutic purposes but only for data collection for teaching or research purposes.

**Table 3: Programmable Channel Type Specs**

Resolution (voltage)	Resolution (bits)	Input Range	Common Corresponding Physiological Signals
6 $\mu$ V	16	$\pm$ 0.187V	EMG, ECG, EOG
1 $\mu$ V	24	$\pm$ 0.187V	EEG, RIP

## Sensor Pod Channels

The BioRadio can support up to two sensor pods. Each can be configured for a sensor and/or pulse oximeter. Each sensor channel can be assigned to a specific sensor type. BioCapture supports the blood pressure sensor, spirometer, hand dynamometer, force plate, and surface temperature sensor. The pulse oximeter will generate three signals: heart rate, oxygen saturation, and photoplethysmogram (PPG). All sensor pod inputs will be recorded at 250Hz sample rate and 12 bit resolution.

## Motion Sensors

Enabling motion sensors displays six graphs for tracking linear acceleration (g) along the X, Y, and Z axis and angular velocity (degrees/second) about each respective axis. The motion sensors have a sample rate of 250Hz.

## Bandwidth Indicator

The bandwidth indicator will update to indicate whether wireless streaming and recording to memory will support the current configuration. Table 4 outlines the four possible bandwidth ranges. Consider reducing sample rate, number of channels or using channel configurations that use a lower bit resolution as needed.

**Table 4 Bandwidth Streaming Support**

Bandwidth (Kbps)	Wireless Streaming	Record to Memory
0-152	Supported	Supported
153-190	Not recommended	Supported
191-500	Not supported	Supported
501+	Not supported	Not supported

## Program Device

To finish, click the "Program Device" button at the bottom of the window. The main window will now appear with the channels displayed for the selected configuration.

## Data Collection

### Start Acquisition

Once the device configuration is complete, click the green arrow (▶) in the tool bar to start data acquisition. Clicking the blue square (■) will stop data acquisition.

**NOTE:** *Missed packets in the wireless data stream appear as gaps in the graphs.*

### Record Data

To record data, click the record icon (●) in the tool bar. A window will appear prompting you to enter a file name and choose the file location. BioCapture recording files have the extension \*.bcrx. Once a file name and location have been selected, click Save and data will begin to scroll on the screen. To stop recording data to the file, click the record icon and the outline will disappear. To stop data acquisition (i.e. data streaming from the device), click the stop icon (■), which will also stop and close any data recording also.

### Event Markers

During data acquisition, event markers can be generated. Software event markers can be customized by selecting Edit and event markers in the main menu bar when data acquisition is stopped. Create an event marker by pressing a key to assign that as the trigger during data collection, selecting a name and color, and click "Add." Press another key to customize additional event markers. Click OK to accept and save the event markers. During data acquisition, press the appropriate key to mark the corresponding event. Events will appear as vertical lines across all displayed graphs and will be recorded to BioCapture recording files (\*.bcrx) or exported \*.csv files.

Hardware event markers can be generated by pressing the bottom button on the BioRadio. When streaming to the computer, hardware event markers will appear on the graphs. When recording to memory, event markers will appear in the BioCapture recording file when imported.

## Data Review

### Save/Open Recordings (\*.bcrx files)

To review data, open a recording file by selecting Open and then Recording from the File menu or the File Open icon in the tool bar. Navigate to your saved recording file and click open. BioCapture will read the recording file and display the recording in the main window. Use the cursor at the bottom of the screen to scroll through the data. In order to easily review hardware and software event markers that were added during data collection, select View and Event Navigator. This window lists all recorded events during data acquisition. If you double click on a specific event, the BioCapture review window automatically moves to the selected event marker time stamp.

### Import Memory Records

BioRadio data recorded to the onboard memory can be imported to BioCapture by selecting Data and then Import Memory File from the top menu bar (Figure 7). Select the Source file (\*.dat) and destination (\*.bcrx) filename. Optionally, one can load the recording file once the conversion is complete. The BioRadio drive may take up to 15 seconds to appear on the computer.

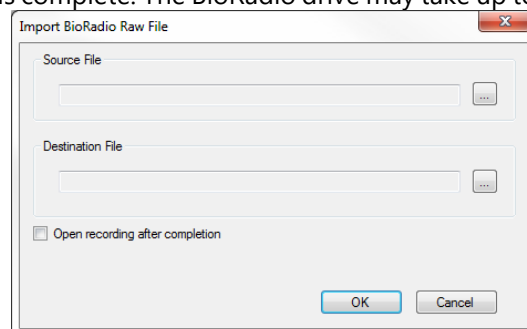


Figure 7: Import Memory File Prompt

**NOTE:** Once connected via the data USB cable, \*.dat files are only accessible when the BioRadio is disconnected from BioCapture (refer to Chapter 2, number 8 note, for instructions on how to connect or disconnect).

**NOTE:** When already recording to memory, connect and stream wireless performance may vary based on BioRadio configuration.

**NOTE:** A Destination File must be entered in order to import the memory record.

### Save/Open Sessions (\*.bcxs files)

Configuration parameters and data display settings (e.g. filters, software gain and offset, units, graph settings) can be saved to a session file for later use. From the File menu, select Save Session. Enter a filename and click Save. To open the session, select Session from the Open menu. Select the file from the list in the Open window and click Open. Your customized display options will be visible.

## Configure Display Properties

Display properties can be customized when streaming or recording data from the BioRadio to BioCapture or when reviewing a loaded BioCapture recording file.

### Set Graph Time Span

The graph time axis can be adjusted using the Graph Timespan option in the tool bar. Available ranges are one to sixty seconds. When the Graph Timespan is set to 1 or 5 seconds, the x-axis will be displayed in increments of milliseconds. Any other timespan selection will display the x-axis in increments of seconds. Additionally, you can also collect data with the x-axis set to either elapsed time or real time display using the Time Scale option in the View menu.

### Graph Settings

Graphs can be individually configured. Select which graphs are visible by clicking Hide Signals. Additional settings including toggling grid lines and signal and background colors can be customized by right clicking on a graph.

### Y-Axis Range

By default, each graph is displayed with a fixed y-axis range based on the configuration selected in the Device Configuration window. The y-axis can either be scaled manually to a specific minimum and maximum or auto scaled. Right-click on the plot area and select Y-Axis to bring up the graph setting menu.

The Y-axis submenu provides three scaling methods:

1. **Set Min/Max:** Manually set the minimum and maximum values.
2. **Auto-scale Continuous:** BioCapture will automatically scale the y-axis to fit the data currently being displayed and continue to update as more data is acquired.
3. **Auto-scale Quick:** BioCapture will scale the y-axis once to fit the data currently displayed on the graph. Press Ctrl-A to auto scale all graphs.

### Cursor

The graph cursor can be enabled by right clicking on a graph and selecting cursor from the menu. A crosshair will appear on the graphed signal and display the x and y coordinates at that point. The cursor can be dragged along the signal to view specific points. This feature is most useful when reviewing data and not streaming.

### Signal Properties

The signal properties can be accessed by either right clicking on a graph or from Edit on the top tool bar. The gain, offset, and units can be specified for each channel. Predefined values may vary based on the BioRadio configuration.

## Filter Settings

Various filters can be applied to an acquired signal. Filter settings may automatically be applied depending on the channel type (programmable or sensor pod) specified in the configuration. To add, modify, or remove a filter, right click on a graph and select Custom Filters.


The custom filter dialog offers four types of filters:

1. **Lowpass:** allows low frequencies to pass through
2. **Highpass:** allows high frequencies to pass through
3. **BandPass:** allows signals in frequency band range to pass through
4. **Bandstop:** prevents signals in frequency band range to pass through


Once the type of filter is selected, one of five filter designs can be chosen:

1. **Elliptic:** equiripple behavior in both the passband and the stopband
2. **Bessel:** linear filter with a maximally flat group delay, or maximally linear phase response
3. **Butterworth:** has a frequency response as flat as possible in the passband
4. **Chebyshev:** a steeper roll-off and more passband or stopband ripple
5. **Inverse Chebyshev:** flatter in the passband than the Butterworth

Depending on the filter type and design, other filter parameters can be set: order, upper and lower cutoff, ripple, and attenuation.

In addition, a notch filter can be applied to prevent 50Hz or 60Hz from passing. This filter is accessible by either right clicking in the graph display or in the menu bar by clicking on the Notch Filter icon (  ) to apply the filter across all channels).

## Frequency Analysis

When streaming data or reviewing a recording, a power spectrum graph can be displayed by double-clicking on an individual graph or selecting the menu bar icon (  ) to view the power spectrum for all graphs (Figure 8). The power spectrum will be calculated based on the most recent two seconds.

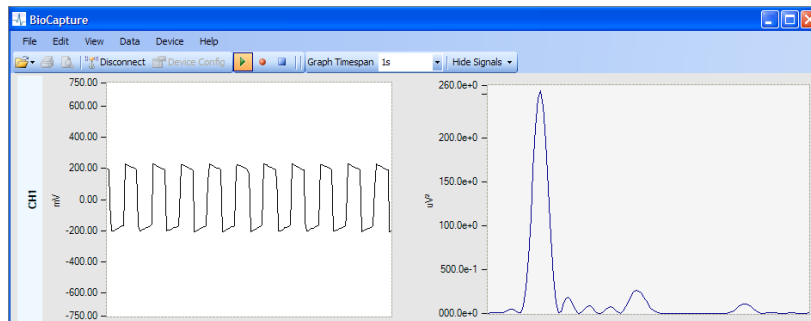


Figure 8: Signal graph and power spectrum

## Exporting Data

You can export recording data to a comma-separated value (.csv) file. With a saved recording file open, select Export to .CSV from the Data menu (Figure 9).

From this dialog either the filtered or raw data can be exported. Exported file will contain a column corresponding to the elapsed time, one column for each signal, and a column for each event marker. Events are indicated by a '1' and otherwise '0'.

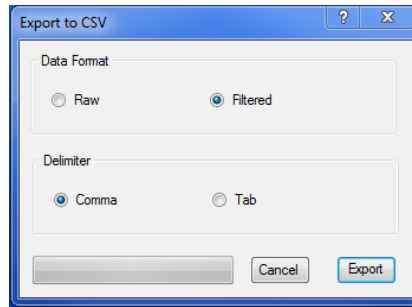


Figure 9: Export to .CSV prompt

### Data Integrity Summary

A summary of the integrity of a data file (i.e., the number of dropped or missed packets) can be accessed by selecting Integrity Summary from the Data menu (Figure 10).

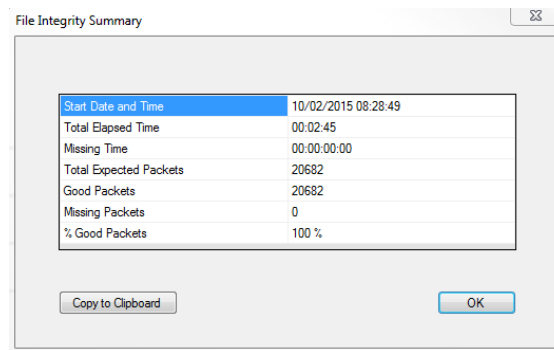


Figure 10: File Integrity Summary

**NOTE:** Missed packets are represented as NaNs in the exported data file.

## Chapter 4: Software Development Kits

Software development kits (SDKs) are provided free of charge with the purchase of your BioRadio system. The SDK includes libraries and documentation for LabVIEW™, MATLAB®, C#, C# for Android, and Java for Android, providing the ability to create custom software applications using the BioRadio. The user can control BioRadio communications and acquisition and collect acquired data in real time. Also included in the SDK is example code demonstrating how to utilize programming code to acquire, plot and process the BioRadio data. These SDKs can be downloaded from the Great Lakes NeuroTechnologies website at: <http://glneurotech.com/bioradio/>



## Chapter 5: Technical Specifications

Table 5 Hardware Specifications

BioRadio	
Transmission Range	100 feet line of sight
RF Band	2.4-2.484 GHz ISM Band
Input Range	±2 V
Resolution	12-24 bit
Noise	0.30 µV rms (250 Hz sample rate and gain of 24)
Sampling Rate	250 Hz-16 kHz
CMRR	-100 dB
Power Source	Rechargeable battery
Battery Life	8 hours (streaming 4 programmable channels)
Battery Recharge Time	3-4 hours
Input Impedance	500 MΩ
Sensor Pod	
Sampling Rate	250 Hz
Bit Resolution	12 bit
Motion Sensor	
Sampling Rate	250 Hz
Bit Resolution	16 bit
Accelerometer Range	±8 g
Gyroscope Range	±2000 deg/sec

Table 6 Detailed Configuration Setting

Menu Selection	Resolution Voltage	Gain	Resolution (Bits)	Differential Voltage Range* [± V]	Single Ended Voltage Range* [± V]
ECG	6 µV	24	16	0.187	0.187
EMG	6 µV	24	16	0.187	0.187
EOG	6 µV	24	16	0.187	0.187
EEG	1 µV	24	24	0.187	0.187
Custom	1 µV	24	24	0.187	0.187
	6 µV	24	16	0.187	0.187
	12 µV	12	16	0.375	0.374
	18 µV	8	16	0.562	0.553
	35 µV	4	16	1.125	0.996
	70 µV	2	16	2.25	1.660
	100 µV	24	12	0.187	0.187
	200 µV	12	12	0.375	0.374
	300 µV	8	12	0.562	0.552
	1 mV	4	12	1.125	0.996
	2 mV	2	12	2.25	1.660
	5 mV	1	12	4.5	2.491

Note: the 'Resolution Voltage' is not necessarily equal to the actual voltage of an individual bit (e.g. at '1 µV resolution' an individual bit is much less than 1 µV but signal to noise ratio makes it inappropriate to claim levels less than 1µV).

\* These voltage ranges may differ based on configuration and bias currents. It is highly recommended to check the voltage range in your set-up and configuration and stay within 80% of the total range.

## Chapter 6: Frequently Asked Questions

### 1. **Why won't my BioRadio connect to BioCapture?**

- a. Verify that the following is true:
  - i. The BioRadio LED display is on.
  - ii. The device ID displayed on the BioCapture status bar matches your device
  - iii. The computer's Bluetooth receiver is enabled. If you are using the external USB Bluetooth adapter, disable the computer's internal Bluetooth receiver.
- b. If you are still unable to connect, power cycle the BioRadio and close and open BioCapture.

### 2. **Why won't my BioRadio turn off?**

- a. If the normal shutdown procedure doesn't work, press and hold the power and event marker buttons at the same time until the device shuts off.

### 3. **Why won't my BioRadio appear as a removable drive on my computer?**

- a. Verify that the unit is connected to the computer via a data USB cable and not a charge only cable.
- b. It is not recommended to be connected wirelessly to the computer when wanting to access the BioRadio drive.
- c. Verify that the BioRadio is disconnected from the BioCapture software
- d. Wait at least 15 seconds for the drive to appear after connecting the BioRadio to the computer via the USB data cable.

### 4. **Why does the data streaming into BioCapture have significant noise?**

- a. Make sure the GND input is plugged in and is well positioned and secured on the body.

### 5. **Why doesn't the sensor pod appear in the BioCapture configuration screen?**

- a. BioCapture detects the number of sensor pods attached to the BioRadio when a wireless connection is initiated. Ensure that the sensor pod is attached, then disconnect from and reconnect to the BioRadio. The sensor pod should then appear in the configuration screen.

### 6. **As a troubleshooting step, how do I perform a hard reset when the device is locked up, unresponsive or otherwise not functioning as expected?**

- a. Press and hold both the power and event marker buttons until the unit powers off. This will take approximately 7 seconds.

BioRadio™ and BioCapture™ are trademarks of Great Lakes NeuroTechnologies, Inc.

Bluetooth® is a registered trademark of Bluetooth SIG, Inc.

LabVIEW™ is a trademark of National Instruments Corporation

MATLAB® is a registered trademark of The MathWorks, Inc.